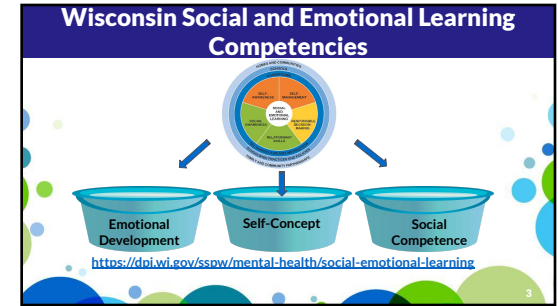
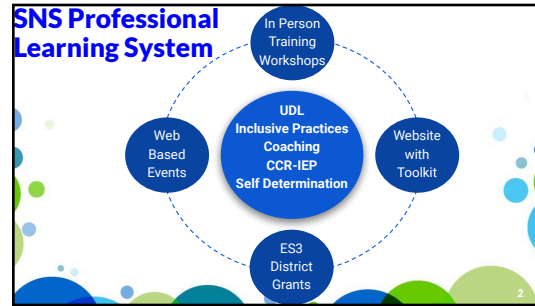




Supporting Neurodiverse Students
PROFESSIONAL LEARNING SYSTEM

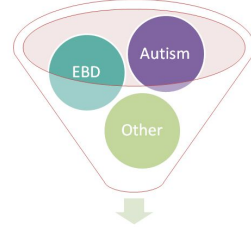
<https://tinyurl.com/neurodiversitywi>



Neurodiverse Learners



4



Disability Related Need

5



6

Self Determination with Self Advocacy

7

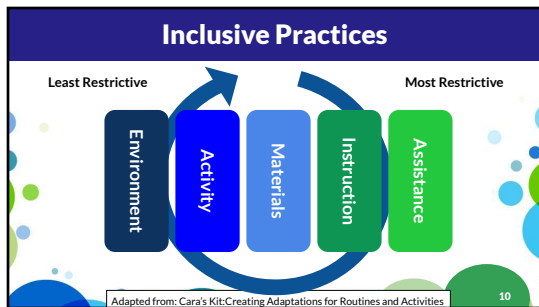
College and Career Ready IEP 5 Step Process

8

UDL Process

©2018 CAST | Until Learning Has No Limits

9



Who Benefits From this Professional Learning System?

- Educators
- Paraprofessionals
- Related Service Providers
- Parents
- Community Partners

In Person Training Workshops

- Two Day Training
- Sensory and Self-Regulation
- Flexibility and Resilience
- Social Communication

Social Communication
Flexibility
Resilience
Sensory
Self Regulation
Executive Functioning

When and Where are they Happening?

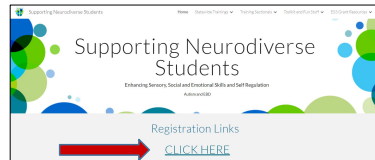
Where: All 12 CESA's



When: Each CESA gets each training over a three year rotation

How do I Register?

<https://tinyurl.com/neurodiversitywi>



ES3 - Enhancing Social and Emotional Skills in Students with IEP's

Competitive Grant ♦ Four LEA's a year added ♦ Three year grant

Coaching System
Inclusive Practice
Increasing Access, Engagement and Progress
Evidence Informed Improvement Practices

<https://tinyurl.com/ES3-WI>

A Common Definition of Coaching



If coaching means different things to different people in different settings, we may not be coaching as intended.

Coaching is intentional, job-embedded professional learning designed to support teachers and staff in implementing practices with fidelity. Coaching takes place **after** training and happens **while** practitioners are doing their work.

The Coaching Competency Practice Profile (CCPP) is a tool that expands on this definition of coaching, allowing coaching to be teachable, learnable, doable, and replicable.

One Stop Information Hub

<https://tinyurl.com/neurodiversitywi>

Contacts

Katie Berg
Statewide Coordinator
kberg@cesa1.k12.wi.us
