

Transition Improvement Grant

Postsecondary Transition Planning (PTP) For Parents

LaNae Jabas, TIG

Central Regional Coordinator - Serving CESAs 5 & 6

May 5, 2021

W IFACETs Webinar



Today's Objectives

Learn about...

- **Steps of the PTP application process from compliance to best practices**
- **Transition tools to increase student outcomes that parents can access**



RESEARCH SHOWS.....

When families are involved, students have:

- Higher grades, test scores, and graduation rates
- Better attendance
- Increased motivation
- Lower suspension
- Decreased use of drugs, alcohol, violence

When Middle & HS families stay involved, students:

- Make better transitions
- Maintain quality of work
- Develop realistic plans for their future
- Have higher graduation rates
- Seek postsecondary education



High Expectations

There are significant associations between parents' expectations and whether their adolescent:

- ▣ Graduated from high school
- ▣ Found employment after school
- ▣ Enrolled or had completed postsecondary education
- ▣ Engaged in both employment & postsecondary education

Parental Expectation for Students with Disabilities, Bonnie Doren 2014



Transition Planning...



Acronyms

- **IEP** - **I**ndividual **E**ducation **P**rogram
- **PTP** - **P**ostsecondary **T**ransition **P**lan (Age 14 part of the IEP)
- **ACP** - **A**cademic **C**areer **P**lan (2017: Age 12 ALL students)
- **Pre-ETS** - **P**re-**E**mployment **T**ransition **S**ervices
- **WIOA** - **W**orkforce **I**nnovation and **O**ppportunity **A**ct
- **SoP** - **S**ummary **o**f **P**erformance - summary of the child's academic achievement and functional performance, which shall include recommendations on how to assist the child in meeting the child's postsecondary goals



What is the PTP?

Postsecondary Transition Plan (PTP)

- Assists school districts to document the post high school transition requirements while meeting individual student needs.
- Guides the IEP team through the transition process by asking a set of questions.
- The PTP will be done during the IEP team meeting with input from all team members.

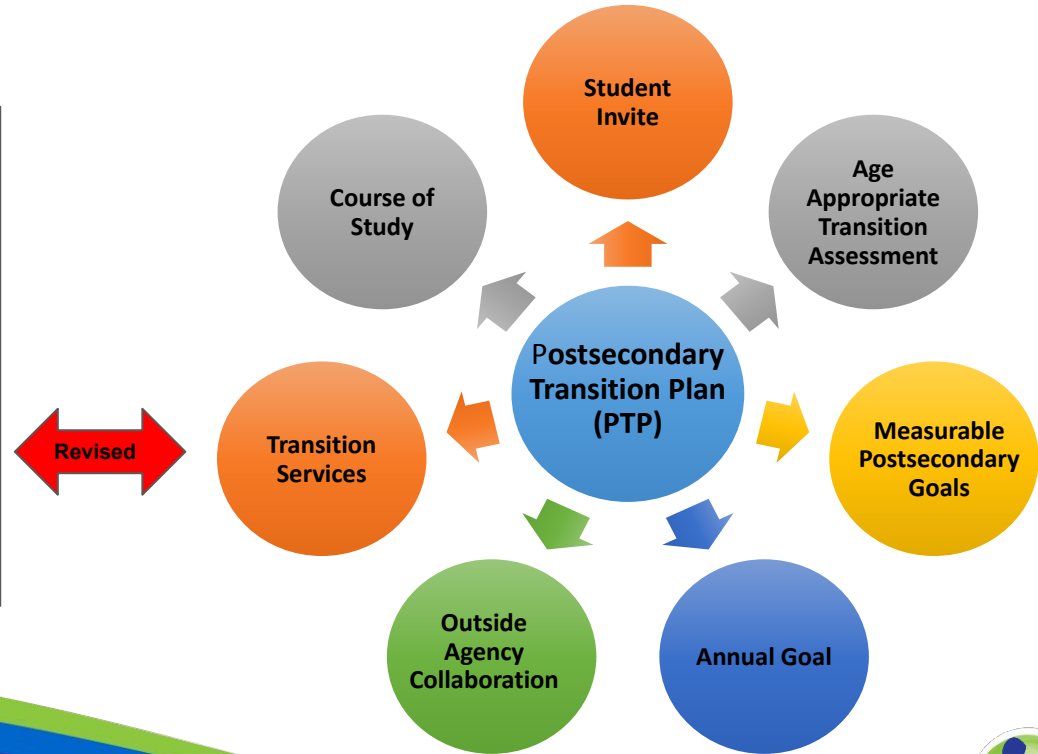


Components of the PTP

Indicator #13
100% "Compliance"

WIOA
Pre-Employment Transition Services
(Pre-ETS)

1. Job Exploration Services
2. Work-Based Learning Experiences
3. Postsecondary & Higher Education Related Services
4. Social & Independent Living Skills Training - **Home**
5. Social & Independent Living Skills Training - **Community**
6. Instruction in Self-Advocacy



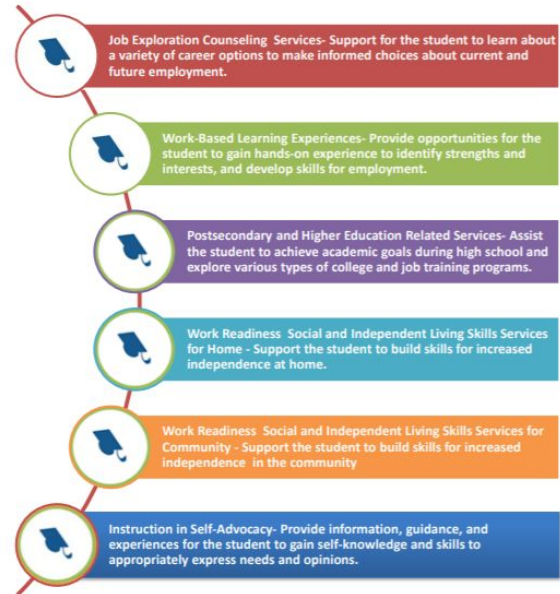
Pre-Employment Transition Services

- Print hard copy
- Review and discuss with your child



Transition Services/Pre-Employment Transition Services (Pre-ETS) Outlined in the PTP

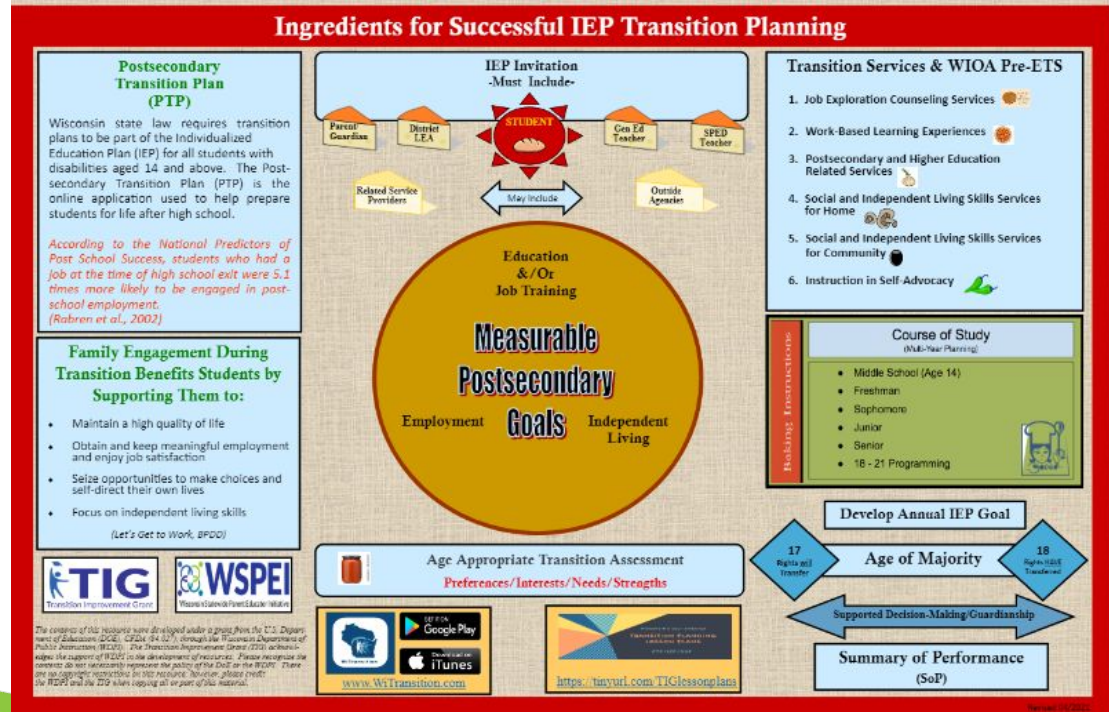
There are 6 basic components to the Transition Services/Pre-ETS as outlined by WIOA law. Below you will find more information for each of the components.



PTP Activity

Predictors of postschool success in employment, education and/or training and independent living for students are high:

- Parent Expectations
- Parent Involvement



Individual Education Program (IEP)



Inside the IEP...

**Postsecondary
Transition Plan
(PTP)**





Student

A photograph of a pizza with tomato sauce, used as a background for the title. A yellow starburst graphic is overlaid on the pizza.

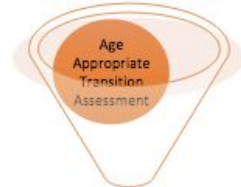
Age Appropriate Transition Assessment (Formal / Informal)



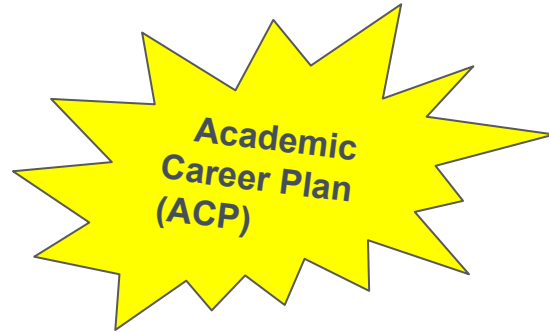
Academic
Career Plan
(ACP)

- Preferences
- Interests
- Needs
- Strengths

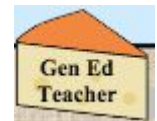
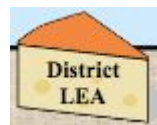




Measurable Postsecondary Goals



Pre-Employment Transition Services (Pre-ETS)



Baking Instructions

Course of Study (Multi-Year Planning)

- Middle School (Age 14)
- Freshman
- Sophomore
- Junior
- Senior
- 18 - 21 Programming



Annual IEP Goal

Age of Majority



Wisconsin Transition Planning App



[App Link](#)

[Supplemental Materials](#)



Resources

Transition Improvement Grant (TIG): www.witig.org	Wisconsin Student-Parent Educator Initiative (WSPEI): www.wspei.org
Wisconsin Department of Public Instruction (DPI): https://dpi.wi.gov/sped/about/state-performance-plan/indicators/13-transition	Division of Vocational Rehabilitation (DVR): http://dwd.wisconsin.gov
Center for Children and Youth with Special Health Care Needs (CYSHCN): www.waisman.wisc.edu/cshcn/	Aging & Disability Resource Center (ADRC): www.dhs.wisconsin.gov/adrc/
Wisconsin Family Assistance Center For Education, Training & Support (WIFACETS): https://wifacets.org/	Independent Living Center (ILC): http://www.il-wisconsin.net/centers-find/



2021-2022 PiP & YiPPE Trainings



Free Transition Trainings for Families of Youth with IEP's Registration Now Open for 2021-2022



Virtual Transition Parents in Partnership (TPIP) trainings will take place virtually via Zoom beginning this fall. Now is a great time to take advantage of top-notch training without the stress of traveling or being away from home! TPIP will prepare families for the transition process for their youth with disabilities ages 14-21 in the areas of employment, education, living and health.

Choose 1 of 2 options: ([View flyer with dates and registration information](#)).

1. Statewide Tuesday Evening Training (13 sessions)
2. Statewide Saturday Training (8 sessions)



Youth in Partnership with Parents for Empowerment (YiPPE) will take place in person at two different locations beginning this fall (Green Bay and Milwaukee). Now is a great time to take advantage of catching up on what you need to know for transitioning your youth from school to postsecondary options while having the opportunity to connect with other families! YiPPE is an opportunity for youth with disabilities and their parents to learn about the transition process in a unique way while building real life skills in the areas of employment, education, living and health!

Choose 1 of 2 options:

1. Green Bay YiPPE ([View flyer with dates and registration information](#)) ([Spanish version](#))
2. Milwaukee YiPPE ([View flyer with dates and registration information](#)) ([Spanish version](#))

Si habla español llame a... Fatima Becerra 414-399-0236, fatimaabecerra@gmail.com

For more information visit: <https://www.wspei.org> or contact Martha DeYoung, PiP & YiPPE Training Coordinator 608-745-5435, deyoungm@cesa5.org

Parents in Partnership and YiPPE trainings are funded by a DPI IDEA Discretionary Grant through the Wisconsin Statewide Parent Educator Initiative (WSPEI) in collaboration with the Department of Workforce Development (DWD) and area school districts which cover all costs associated with these trainings.



Questions



Contact Us

www.witig.org

TIG Contacts 2020-2021



Alicia Reinhard
Grant Director
Department of Public
Instruction
Alicia.reinhard@dpi.wi.gov
(262) 689-1469



Pam Jenson
Statewide Grant Project
Coordinator
pam.jenson@cesa2.org
(608) 921-1400



Jennifer Hilgendorf
Statewide Indicator 1 & 2
Coordinator
jhilgendorf@cesal.k12.wi.us
(920) 609-7410



Amanda Jones
Southeastern Regional
Coordinator
CESA 1
ajones@cesal.k12.wi.us
(262) 203-3181



Brian Kenney
Southern Regional
Coordinator
CESAs 2 & 3
bkenney@cesa3.org
(608) 448-9034



Brenda Swoboda
Western Regional
Coordinator
CESAs 4, 10, & 11
bswoboda@cesa4.org
(608) 779-9046



LaNae Jabas
Central Regional Coordinator
CESAs 5 & 6
jabasl@cesa5.org
(608) 963-4799



Jenny Jacobs
Statewide Indicator 14 &
Eastern Regional Coordinator
CESA 7
jjacobs@cesa7.org
(920) 617-5630



Shelley Lehman
Northern Regional Coordinator
CESAs 8, 9, & 12
slehman@cesa9.org
(715) 891-0474



Lisa Van Dyke
Administrative Assistant &
Evaluation Coordinator
lisa.vandyke@cesa2.org
(262) 473-1446

